

CLUB MEDICAL PATTAYA

By DOC MARTYN

MEDICAL SECOND OPINONS
PAIN MANAGEMENT
MASSAGE
HEALTH SCREENING

SEE: FACEBOOK
CLUB MEDICAL PATTAYA



APPOINTMENT ONLY
Eng: 095 414 8145
Thai: 080 143 2150



Club Medical Pattaya is a health forum which provides second opinions on anything medical.

These opinions are complimentary and provided by Doc Martyn.

If you wish to attend the forum, please bring with you all your medical records and pathology and radiology results.

The forum does not provide primary health care.

The club also provides Traditional Thai Massage, pain management and health screening.

Consultations are by appointment only.

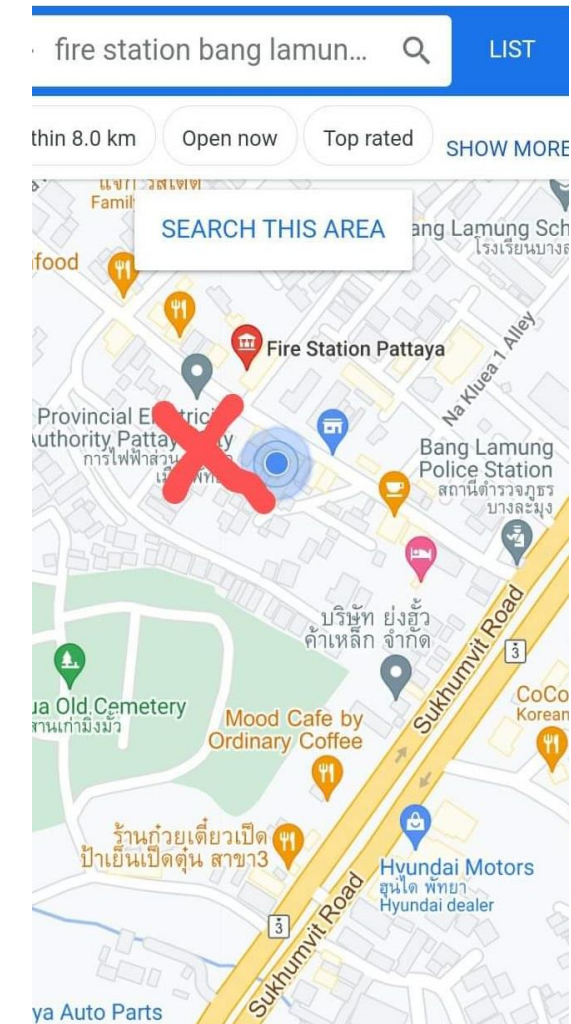
The forum is run from Dahla Spa Massage in Bang Lamung.

For further information see Facebook: Club Medical Pattaya

The Spa has a new name: Dahla Spa Massage.

The Spa is directly opposite the Bang Lamung fire station, see map.

Directions: From Pattaya, travel north on Highway 3. Continue past the Bangkok Hospital Pattaya, Thonglor Pet Hospital, Maxxis, Pornchai Electrics. Note the road sign to turn left into Bang Lamung. Turn left at the Ruangthip Hotel. Follow the road past 7/11 and Amazon's. Note the orange and yellow wall of the Spa (it's a house) opposite the Fire Station. Off road parking is available in front of the Spa.



The Spa can be found on Google Maps: Dahla Spa Massage, Bang Lamung



Genetic Bioweapons, the Spike Protein, Human Trials and the 2030 Great Reset.

By

Doc Martyn

See Facebook: [Doc Martyn \(Thailand\)](#)

Genetic Bioweapons

America introduced the Biomedical Weapons Anti-Terrorist Act in 1990. The storage of biological weapons for use in war is illegal. Such use constitutes a war crime. On the other hand, the storage of biological weapons for defensive biological research is not prohibited. Nor is standard research on these biologicals.

Indeed, these biologicals may be used for legitimate medical care.

Worldwide, 60 nations stockpile bioweapons. 22 nations have BSL-4 (biosafety level 4) laboratories, which are capable of genetic manipulation and the weaponising of microorganisms.

China has one BSL-4 laboratory. It is in Wuhan



In the laboratory, Corona Virus underwent gain of function to produce SARS-CoV-2 .

Dr Anthony Stephen Fauci is an American physician, scientist and immunologist who, prior to and during the pandemic was serving as the Director of the National Institute of Allergy and Infectious Diseases.

Fauci spearheaded the research into Human Immunodeficiency Virus, a **retrovirus**, and its associated illness, Acquired Immune Deficiency Syndrome. His team then researched the Corona Virus.

Under the Biomedical Weapons act, in the USA it is illegal to increase the pathogenicity and the virulence of a virus, known as gain of function.

With the progression of the research on the Corona Virus, gain of function was inevitable. China did not restrict gain of function research. To finish the research, Fauci moved his team to the Wuhan laboratory, using USA Government funds from the NIH, at least US\$ 4million, to finish the research.

Kristian Andersen, an infectious-disease expert at Scripps Research, in San Diego, began tracking the virus (SARS-CoV-2) in January, 2020. His opinion: This new virus was spreading far more quickly, reaching at least twenty-six countries by the end of the month. “It seemed to be locked and loaded for causing the pandemic”. Most viruses circulating in the wild, though some can be deadly, are not very good at transmission. They are still animal viruses. “This virus, almost from Day One, appeared like a human virus.” Andersen noted that “a really small part” of SARS-CoV-2’s genome had “unusual features” and its spike was able to bind tightly to the ACE2 protein. “This means that it’s more effective at infecting human cells.”

Of concern: Fauci has habitually misrepresented the truth about Covid-19, the gain of function research and America's funding of the Wuhan laboratory. He has lied to the American Congress and to the American people.
If you are doubt this, read his recently published e-mails.



Lying to Congress carries an automatic 5 year jail sentence. Yet this mendacious narcissistic sociopath remains free.

The Spike Protein

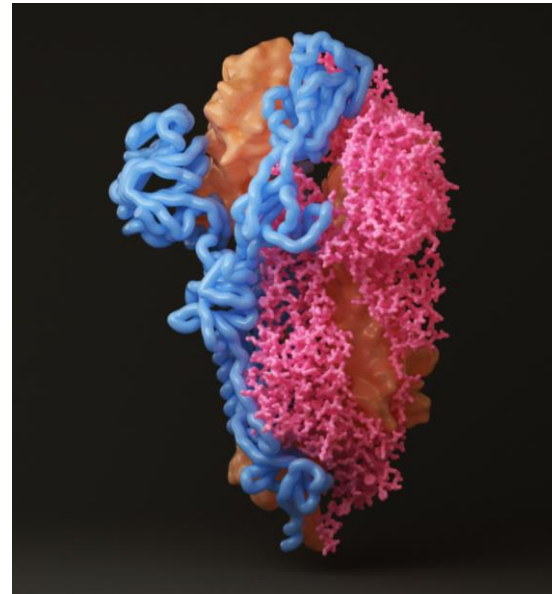
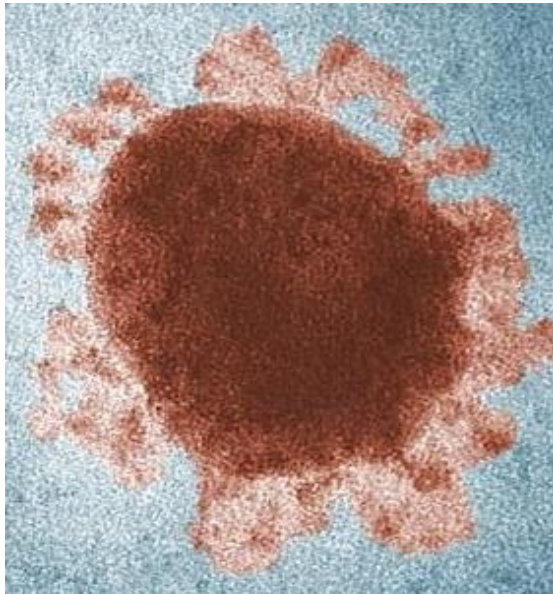
The Spike Protein

The peplomer (from the Greek peplos; meaning a robe or cloak) protein, is a glycoprotein that forms a structure which projects from the surface of the enveloped virus. It looks like a crown, hence the name Corona (Latin for crown) Virus.

In SARS-CoV-2, the peplomer proteins assemble into trimers, 3 bits, that form large structures, called spike proteins, which also projects from the surface of the virion.

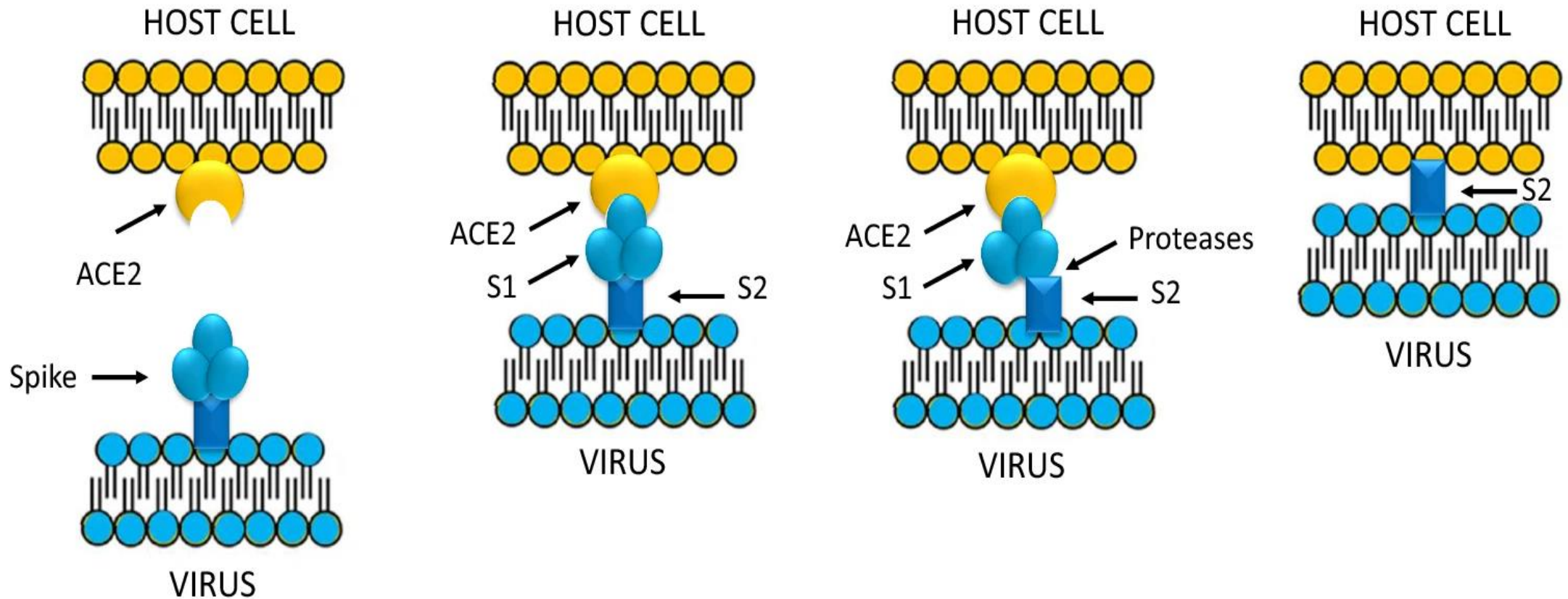
The spike protein is responsible for viral entry into the host cell. It is essential for viral replication.

The Spike protein is highly antigenic, accounting for most of the antibodies produced by the immune system in response to infection. For this reason the spike protein has been the developmental focus for Covid-19 vaccinations.



Angiotensin-converting enzyme 2, ACE2, is a protein on the surface of many cell types. The spike protein binds onto the ACE 2 enzyme blocking its activity.

Initial binding → Proteolytic activation → Membrane fusion



ACE2 is present in many cell types and tissues including the lungs, heart, blood vessels, kidneys, liver and gastrointestinal tract.

ACE2 is a vital enzyme in the renin-angiotensin-aldosterone biochemical pathway which regulates processes such as blood pressure, wound healing and inflammation.

ACE2 helps modulate the many activities of the protein Angiotensin II which increases blood pressure and inflammation, causing blood vessel and tissue damage.

ACE2 dissects Angiotensin II into smaller molecules that counteract the dangerous effects of Angiotensin II. When the SARS-CoV-2 spike protein binds to ACE2, it prevents ACE2 from performing its normal function to regulate Angiotensin II. The inhibition of ACE2 removes the brakes from Angiotensin II signalling, and more Angiotensin II is available, which causes tissue damage.

Angiotensin II increases inflammation and death of cells in the alveoli that, in patients with COVID-19, contributes to lung and heart injury.

The Pulmonary alveolus, of which there are millions in each lung, is the site of exchange of oxygen from the air and carbon dioxide from the host's blood.



From Latin; alveolus, "little cavity"

Human Trials

The different vaccines

Inactivated vaccines:

The disease-carrying virus is inactivated or killed to produce the vaccine. Inactivated vaccines are safe and they are commonly used for childhood vaccinations.

Sinovac and Sinopharm Covid-19 vaccines are inactivated vaccines.

Viral vector vaccine:

This type of vaccine uses a safe virus, termed a vector, to deliver viral proteins that trigger an immune response in the host. The Ebola vaccine is a viral vector vaccine.

AstraZeneca and Johnson and Johnson Covid-19 vaccines are viral vector vaccines.

Nucleic acid vaccine:

Genetic vaccines are new. The nucleic acid vaccine delivers a specific set of instructions, either as DNA or messenger RNA (mRNA), to make a protein that will stimulate an immune response in the host.

Prior to the Covid-19 pandemic, in humans there was no empiric evidence to confirm the ability and suitability of using a mRNA vaccine to stimulate an immune response.

Currently, relevant data about efficacy, the short and long-term side effects and the consequences of using mRNA vaccinations remains woefully inadequate.

Yet, the FDA provided emergency use authorisation for this type of vaccine.

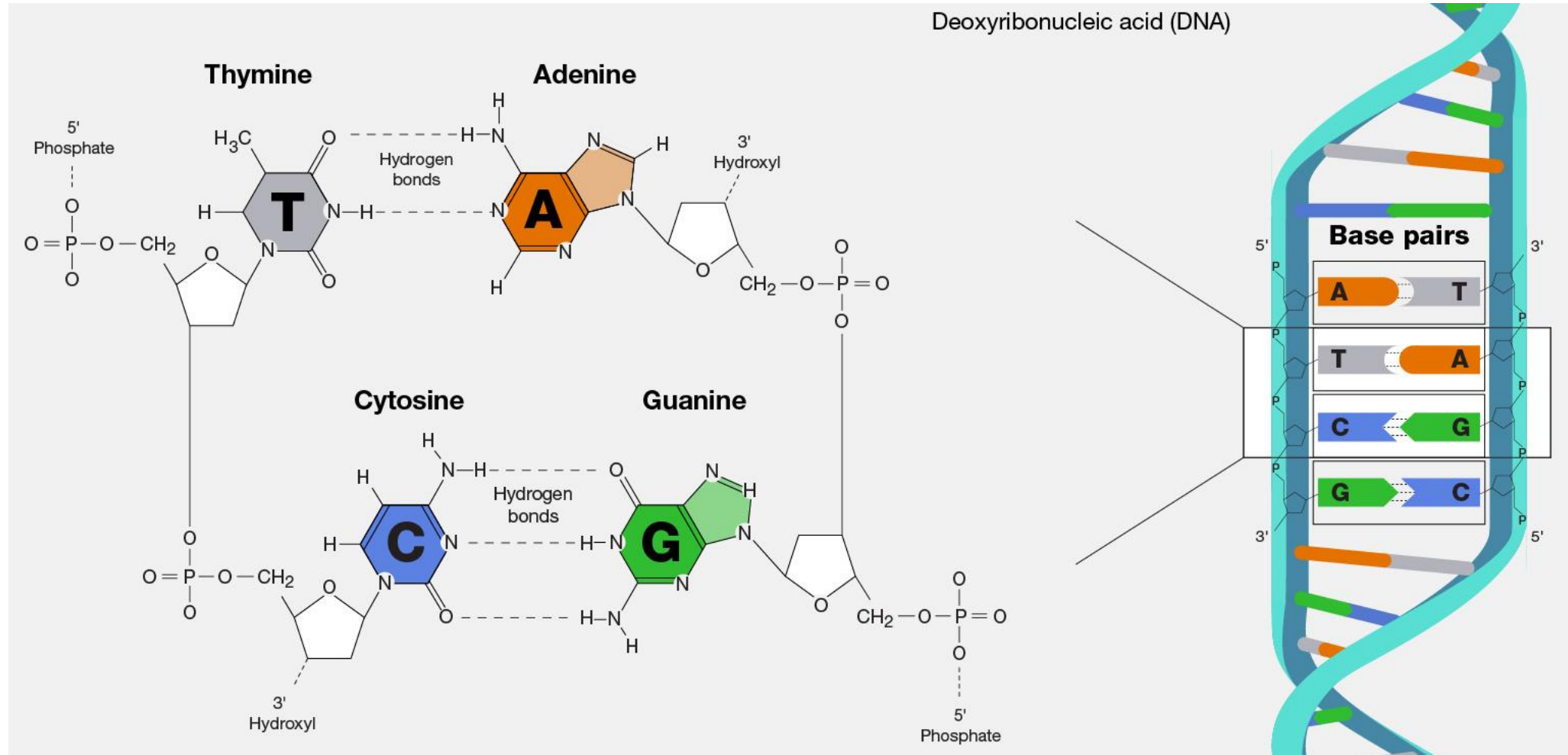
The Moderna and Pfizer Covid vaccines are nucleic acid vaccines.

Initially described by Watson and Crick in 1953, in the nucleus of our cells, our genetic code is contained within a double helix framework called Deoxyribose Nucleic Acid, our DNA .

A gene is a region of DNA that encodes function.

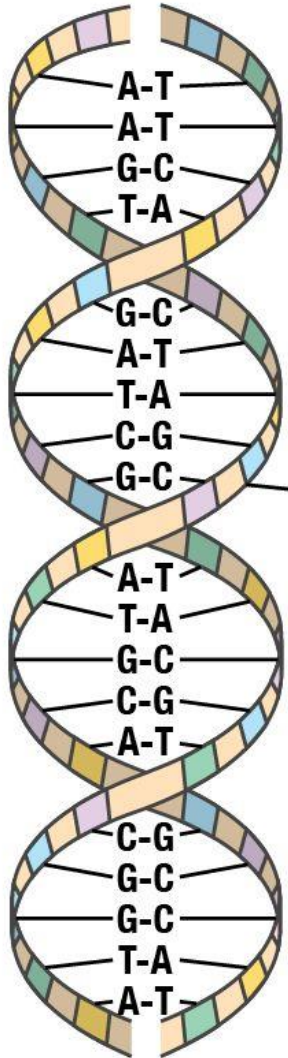
DNA is composed of nucleotides that are linked into chains (the genetic code) and alternating phosphate and sugar groups which form the backbone of the double helix.

DNA is made from 4 base pairs, in which Thymine always pairs with Adenosine and Cytosine always pairs with Guanine.



How DNA directs protein synthesis

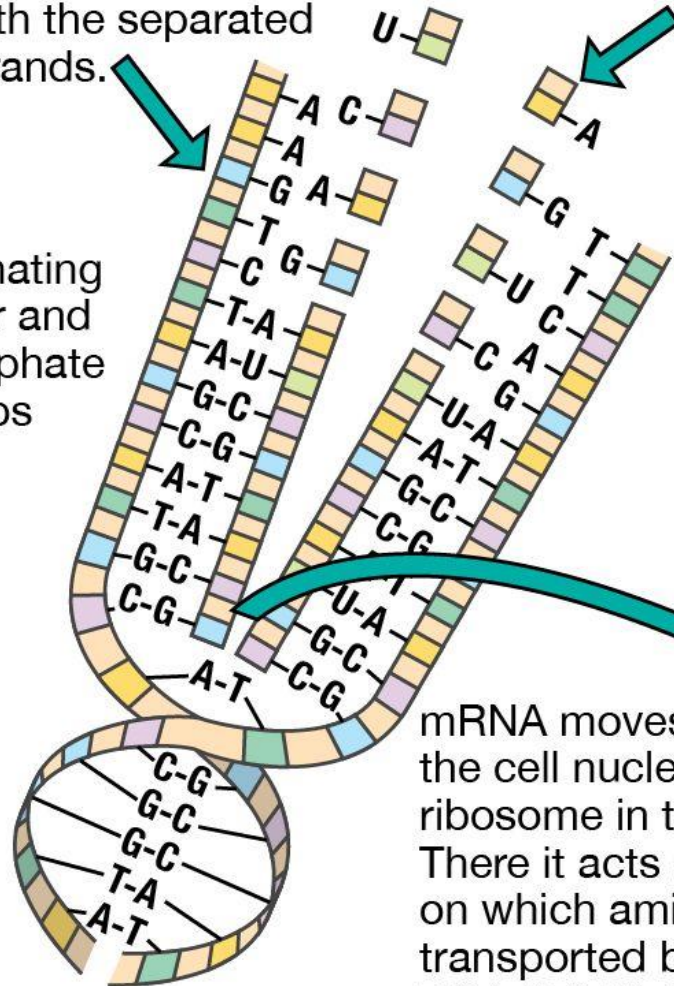
1. Double-stranded DNA in the cell nucleus



alternating sugar and phosphate groups

2. Messenger RNA (mRNA) forming on DNA strands

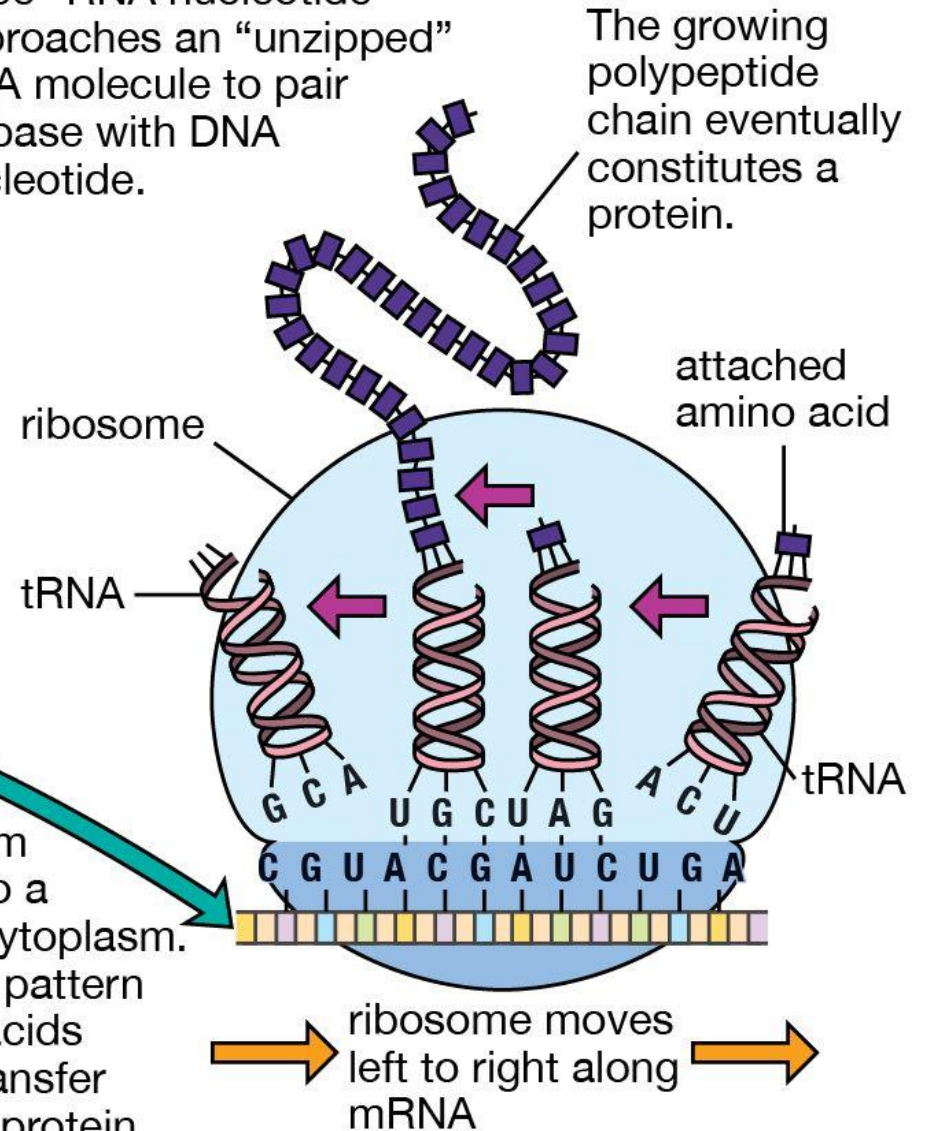
Strands of DNA "unzip" and allow "free" RNA nucleotides to link with the separated strands.



"Free" RNA nucleotide approaches an "unzipped" DNA molecule to pair its base with DNA nucleotide.

mRNA moves from the cell nucleus to a ribosome in the cytoplasm. There it acts as a pattern on which amino acids transported by transfer RNA (tRNA) form protein.

3. Formation of protein on ribosome



The novel Covid-19 vaccines made by Moderna and Pfizer are mRNA vaccines.

During vaccination, these experimental vaccines are injected into the deltoid (shoulder) muscle. The deltoid muscle is activated when the vaccine enters the muscle cell.

The Ribosomes in the cytoplasm of the muscle cell move along the mRNA, from the vaccine, and the transfer RNA builds peplomer proteins from the amino acids contained within the cell. These proteins then bind in trimers, to make the Spike Protein.

Once the vaccinated cell dies, the released Spike Proteins are moved to the regional lymph nodes where T and B cells stimulate the host's immune system, developing host immunity. Note; this takes time.

But what about the negative effects of the vaccine produced Spike Proteins on the protective ACE2 enzyme of the host cells. As discussed previously, the Spike Protein inhibits the ACE2 enzyme which removes 'the brakes' on Angiotensin II signalling resulting in more Angiotensin II to damage tissues, **which may be lethal**.

In 2019, the number of unexpected deaths in the US was 483,000, nearly 1 in 6. In 2021, more than 892,000 of the 3,456,000 deaths in the US, about 1 in 4, were excess deaths. That represents an 84.7% increase in excess deaths in the US between 2019 and 2021.

Is this increase in excess deaths caused by the vaccine made Spike Protein? We do not know....yet!



Cancers Appearing In Ways Never Seen Before

Dr Harvey Risch, Professor Emeritus of Epidemiology at the Yale School of Public Health.

There is evidence that cancers are occurring in excess after people receive Covid-19 vaccinations. Patients must now wait months, not weeks, to get an appointment at an oncology clinic in New York.

Clinicians are seeing 25 year olds with colon cancer who don't have family histories of the disease. Vaccinated women are now seen to remanifest breast cancers in a much shorter periods of time.

Dr Risch's opinion:

Nobody should get vaccinated with an mRNA vaccine. There is no reason for people to be vaccinated now, to any degree.

My opinion:

This is what happens when mRNA engineered Spike Proteins bind with the body's protective ACE2 enzyme.

In the United States, vaccine development is a long, complex process, often lasting 10-15 years and involving a combination of public and private involvement.

Stages of Vaccine Development and Testing:

Exploratory Stage: Basic laboratory research often lasting 2-4 years.

Pre-Clinical Stage: Pre-clinical studies to assess the safety of the candidate vaccine and its ability to provoke an immune response. The pre-clinical stage often lasts 1-2 years.

Phase I Vaccine Trials: Uses a small group of adults, between 20-80 subjects; to assess the safety of the vaccine and to determine the type and extent of its immune response in humans.

Phase II Vaccine Trials: Involve several hundred individuals; to study the vaccine's safety and immunogenicity.

Phase III Vaccine Trials: Involve thousands to tens of thousands of people. These trials are randomised and double blind involving the experimental vaccine being tested against a placebo. Goals;

1. To assess vaccine safety in a large group of people. Rare side effects might not surface in the smaller groups of subjects tested in earlier phases.
2. To assess vaccine efficacy; a) Does the vaccine prevent disease? b) Does it prevent infection? c) Does it lead to production of antibodies or other types of immune responses related to the pathogen?

Note: The trials of the Omicron vaccine went directly to Phase III trials in which Pfizer only used 1,200 subjects!

Next Step:

Approval and Licensure:

The FDA inspects the factory and approves the labelling of the vaccine.

Phase IV Trials:

Optional studies that drug companies may conduct after a vaccine is released.

VAERS:

Established in 1990, the Vaccine Adverse Event Reporting System was introduced to detect possible signals of adverse events associated with the vaccine. VAERS is a voluntary reporting system.

The CDC monitors VAERS data

Until Covid 19, this comprehensive process was mandated and strictly adhered to.

Follow the money:

The Federal Drug Administration, FDA, was established on June 30, 1906.

It is an American regulatory body which holds extensive powers to control the food and drug industries.

Since inception, the FDA has been federally funded. In 2020 its budget, from the federal government, was US\$3.16billion.

Over recent decades, the FDA has imposed 'user fees' on the pharmaceutical companies who apply for drug registration.

Currently, 45% of the total FDA budget, an estimated US\$2.06billion, is derived from these 'user fees'.

This financial windfall from Big Pharma has altered the practices of the FDA:

In 2005 only 38% of first-time approvals were granted. By 2018, that number had risen to 61%.

The FDA has lost its independence. It is no longer driven by integrity and science. It is driven by profit.

This conflict of interest has become outrageous:

Senior FDA officials now overturn independent scientific evidence, allowing a 'lower burden of proof' to ensure a drug is approved.

In addition, independent experts are paid US\$10,000 to over US\$ 1million by Big Pharma to appear before the FDA

The FDA regulatory system is now flawed and corrupted. Harmful drugs are being approved. In recent years, within 12 months of their FDA approval, up to 21% of all new FDA sanctioned drugs had their license revoked or received a Black Box warning regarding very serious side effects.

Big Pharma has deep pockets. It exercises influence over the US legislature, the WHO, Medical Education, Medical Schools, Drug Research and the Medical Profession.

Big Pharma is all about the money. There are over 7.846 billion people on our planet. If only half of these people received the requisite 2 Covid vaccinations, at a cost of US\$25/vaccination, gross takings for Big Pharma would exceed US\$197.5 billion.

Chimeric change

According to Greek mythology, a Chimera is a fire breathing hybrid monster: A lion with the head and neck of a goat on its back and a snake for its tail. Chimeric change sounds like science fiction.



A 2015 research paper by Baric, Shi, et al, published in the journal Nature, discussed the potential of SARS-like bat coronaviruses to cause human disease. The researchers created a chimeric virus with the spike protein of the bat coronavirus and a mouse-adapted SARS backbone. They found that this nascent virus could replicate in human airway cells.

Science fiction had become science fact!

Transcriptase is the enzyme that, during transcription, catalyses the formation of Ribose Nucleic Acid, RNA, from the Deoxyribose Nucleic Acid, DNA, template.

Reverse Transcriptase is the enzyme that catalyses the transcription of RNA into DNA. It is a process usually confined to **retroviruses** (like HIV) and cancer.

Intracellular Reverse Transcription of Pfizer BioNTech COVID-19 mRNA Vaccine BNT162b2 in Vitro in Human Liver Cell Line.

Marcus Alden et al. Lund University, Sweden

2022 Feb 25;44(3):1115-1126. doi: 10.3390/cimb44030073

Abstract:

Preclinical studies of Pfizer's COVID-19 mRNA vaccine, BNT162b2, showed reversible hepatic effects in animals that received the injection. Another study showed that SARS-CoV-2 RNA can be reverse-transcribed and integrated into the genome of human cells. (This was already known by Fauci from his HIV research. Yet the vaccination proceeded to the phased trials).

In this study, they investigated the effect of the mRNA vaccination on the human liver cell line Huh7, in vitro.

Huh7 cells were exposed to the vaccine. High levels of vaccine were detected in the Huh7 cells and changes in gene expression of endogenous reverse transcriptase, were noted.

The results indicated a fast up-take of the mRNA into the human liver cells, leading to changes in transcriptase expression and distribution.

It was shown that the mRNA vaccine is reverse transcribed into DNA in as fast as 6 hours after vaccine exposure.

Such changes in host DNA may not be seen, but the progeny born from this DNA are likely to be chimeric.



Hindu: Lady Durga with her chimeric child

The DNA from any two people is 99.9% identical, with that shared blueprint guiding our development and forming a common thread across the world. The differing 0.1% contains variations that influence our uniqueness, which when combined with our environmental and social contexts give us our abilities, our health, our behaviour.

It is plausible that a targeted 0.1% change in our DNA could make us all the same.

That is terrifying

Since the beginning of the Pandemic, Fauci orchestrated the international response to the pandemic. He instructed the FDA to fast-track vaccine approval, which they did.

Using emergency provisions, the FDA inappropriately sanctioned the use of the novel mRNA vaccines in which Fauci was heavily vested (he indirectly controlled 50% of the shares in Moderna) and he held 7 patents, with 5 pending, regarding viral technology and control.

Fauci is a medical doctor. As a practitioner, he was ethically obliged to restrict the FDA's fast tracking of vaccination approval to the inactive vaccines and/or the viral vector vaccines, both tried and tested delivery systems.

The mRNA vaccines were novel. There was no data about the effects of this form of vaccination in humans. Questions about dysregulation of the host's immune system, the effect on fertility, cancer and thrombosis remain unanswered.

Fauci's introduction of mRNA vaccines constitutes medical negligence. By fast tracking the mRNA vaccines, Fauci facilitated an experiment on humanity. In doing so, he ignored the Hippocratic Oath, he ignored the Nuremberg Code, he ignored the World Medical Association's Declaration of Helsinki, and he ignored the International Code of Medical Ethics.

Fauci had no right to experiment on us without our fully informed consent.

The 2030 Great Reset.

Established in the aftermath of World War 11, the Rules-Based International Order (RBIO) is a set of rule-based global orders structured and based on political liberalism, economic liberalism and liberal internationalism.

It entails international cooperation through multilateral institutions (eg; the UN, World trade Organisation and the IMF).

It is constituted by human equality (freedom, rule of law and human rights), open markets, security cooperation, promotion of liberal democracy and monetary co-operation (source Wikipedia).

The World Economic Forum (WEF) is the complete antithesis of the RBIO.

Established in 1971 by the German, now Emeritus, Professor Klaus Schwab, the son of the ignominious Eugen Schwab, became the founder and Executive Chairman of the World Economic Forum (WEF) which, in association with the Global Public Private Partnership (GPPP), is working towards Globalism.

To exercise control over the proletariat, the WEF will use the Collectivism approach. This philosophy is, in part, based on the 2500-year-old teachings of Confucius; through which Collectivism takes priority over Individualism. This is Communism. Since the inception of the WEF, Schwab has held private annual meetings in the heavily guarded Davos Estate, Switzerland. The meetings are attended by the elite from around the world.

Over the years, the WEF foundation has received USD billions in tax free donations. The rich get richer!



In 2020, only 6 months after the Covid crisis began, with Thierry Malleret, Schwab published the manuscript: COVID-19: The Great Reset.

If you read this document, it is evident that it was written prior to the Covid-19 pandemic and adapted to the crisis. Indeed, Schwab's original paper was written in 2014.

According to the WEF, global dominance will improve at least 16 facets of life; spanning from the reduction of violent crime through improved living conditions, clean air and clean electricity, to resolving climate change.

The 'Great Reset' will rely on three different approaches:

1. The digitisation of money,
2. The incorporation of identification technology and
3. The imposition of a social credit system.

The digitisation of money:

The WEF recommends that Central Banks produce their own Digital Currency, CBDC. CBDC are digital versions of a country's physical currency; a digital dollar, a digital euro, a digital pound.

At the end of 2022 more than 100 countries, including 9 G20 nations, were exploring CBDC.

CBDC with blockchain technology will place governments in absolute control.

Currently, CBDC technology is being incorporated into the wholesale sector, not the retail sector.

Once CBDC is applied to the retail sector, those holding private digital currency, like Bitcoin, Ethereum and XRP **beware:** You are holding fiat currency.

Once the transition to CBDC is complete, unless the government sanctions the private DC, it will be worthless, and the value of a private digital wallet will likely be zero.

Identification technology:

The IT axiom states: Whomever controls personal data controls the people

Facial recognition and biometric technology will be used to identify all individuals in the Collective. Radio-frequency identification (RFID) implants will be mandated. This type of subdermal implant will contain the individual's unique ID number, which will be linked to information contained in an external database, eg; identity, criminal record, medical history, current medication, address book etc.

The social credit system:

This will be the last system to be introduced. In China the term covers two different issues; 'financial creditworthiness' and 'social creditworthiness'. The system is based on a credit score between 350-950. A score of less than 350 causes the individual to be black listed, which has significant repercussions.

Currently this social credit system operates in at least two Chinese provinces and is based on the Confucian ideology of exalting the virtuous and the capable.

Addendum:

The use of Individual Carbon footprint Trackers has also been suggested.

At present, the world is undergoing transformation and World War 111, a politician's war, is underway. This war is not about countries and sides. It is about Individualism vs Collectivism (the perennial Capitalism vs Communism).

The proponents of the WEF are fundamentally Marxist in their purview. Marx sanctioned the abolition of private property and the weaponising of human compassion.

In China in the 1940/1950s, Mao followed Marxist principles. Under his brutal regime 80 million Chinese people died.

Likewise in Russia, according to Aleksandr Solzhenitsyn, during the same period Stalin's Marxist regime killed an estimated 20 million people, who, according to *The Gulag Archipelago*, suffered abhorrent privation and cruelty.

And, the capacity of man to abuse his fellow man is evidenced in the Imperial Japanese Army Unit 371 (1936-1945). It was a covert biological and chemical warfare research and development unit. It killed an estimated 200,000 to 300,000 people.

The suffering of the inmates, called logs, from the heinous treatment these folk suffered, which included vivisection, organ procurement and amputation performed without anaesthesia, was repugnant.

But this happens when sociopaths are in control, because 'Power tends to corrupt'.

The WEF favours an Authoritarian Technocracy. Their psychological approach; drive people to expect less and to promote 'mass formation' (a form of hypnosis).

Reduction of expectation relies upon 3 things:

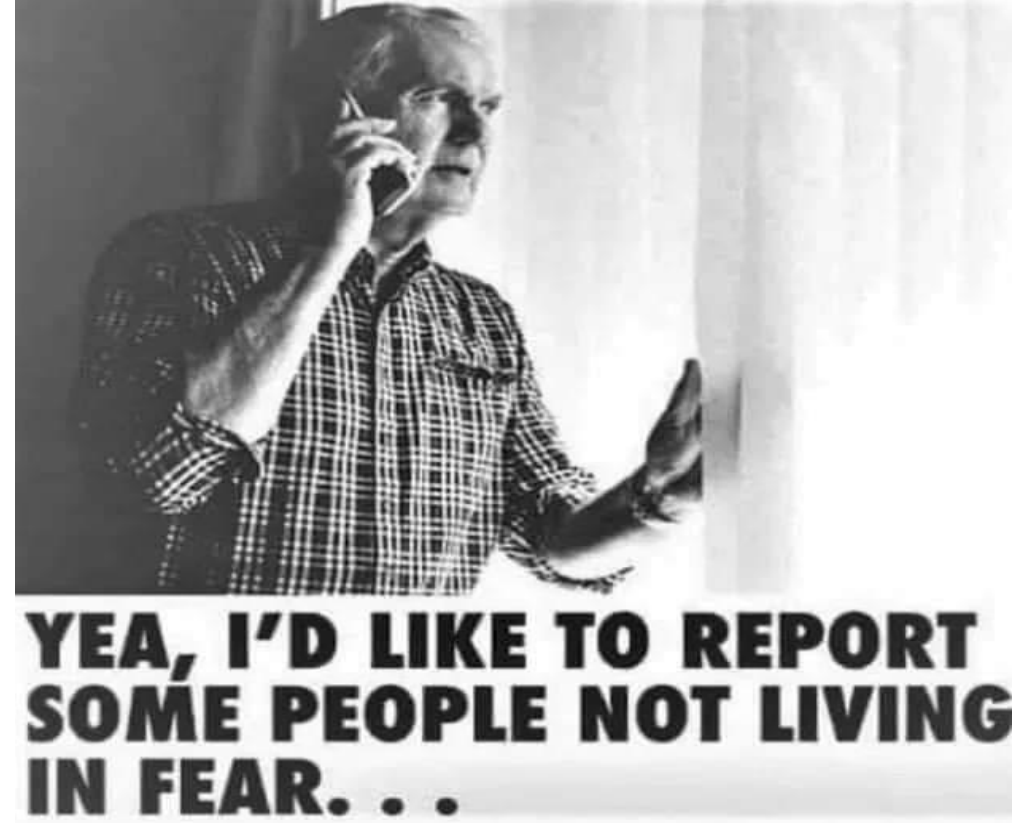
- a. The majority of the population need to feel lonely,
- b. The population should be in a state of fear,
- c. The population should feel disconnected from the environment.

All these conditions were realised during the recent Covid-19 pandemic.

Mass formation is mob or crowd psychology. It has 3 stages:

1. **Submergence** — characterised by losing individual identity or de-individuation. **De-individuation** theory indicates that being in a crowd lessens personal identity, guilt, self-evaluation, empathy and other individual morality-related behaviours.
2. **Contagion** — a phase characterised by having individual ideas and emotions greatly influenced by the dynamics of their surrounding masses.
3. **Suggestion** — the phase where the group has developed a shared unconscious which affect their decisions and feelings.

Freud also suggests that being in a crowd reveals the unconscious given; that the personal moral principle is displaced by the more powerful masses, or a more influential group leader. The best example; many Germans blindly followed Hitler's immoral and inhumane orders during the holocaust and actually believed that it was for the "greater good".



Further, over the years, in both schools and Universities, there has been a significant insidious shift in education policy.

Marxist educators have been radicalising students, encouraging a social disconnect between the students and their parents.

The woke movement is also entrenched in Marxism. Their philosophy is both oppressive and anti-intellectual.

This 'war' is not about the loss of national sovereignty. It is about the suppression of the human soul, the suppression of the human spirit, the suppression of human free will: The loss of freedom.

Orwell's 1984 was a novel based on the future management of human needs and desires. 2030 will be the defining application of this tyranny. 1984 introduced the concept of 'Big Brother'. Many successful autistic savants and sociopaths are represented in the WEF and these people are making decisions about the progress and future of mankind. The problem; sociopaths like Fauci and people on the autistic spectrum have restricted or no empathy.

If successful, the WEF will exercise behavioural control over the masses, based on decisions formulated by a foundation of emotionally challenged and/or privileged individuals, who care little about humanity. And the self appointed 'Big Brother' will remain in control because 'Absolute power corrupts absolutely'.