



My Life as a “Lampie”



A lifelong passion



The Stables –
Wavendon,
Bucks, UK



Johnny Dankworth (1927-2010) co founder with Cleo Laine (1927-2025)

How did I
get
involved?

Had been a regular patron at the venue for a number of years

Retired from my day job with BT in 2007

Only had my (at that time) part-time University work

Had time on my hands

How did I get involved?



Attended an induction event for new Stablemates (volunteers)



Spent a year or so doing various front of house roles – usher, door steward, ice cream seller, car parker, barman etc.



Heard that some of tech staff, particularly lampys, where also volunteers

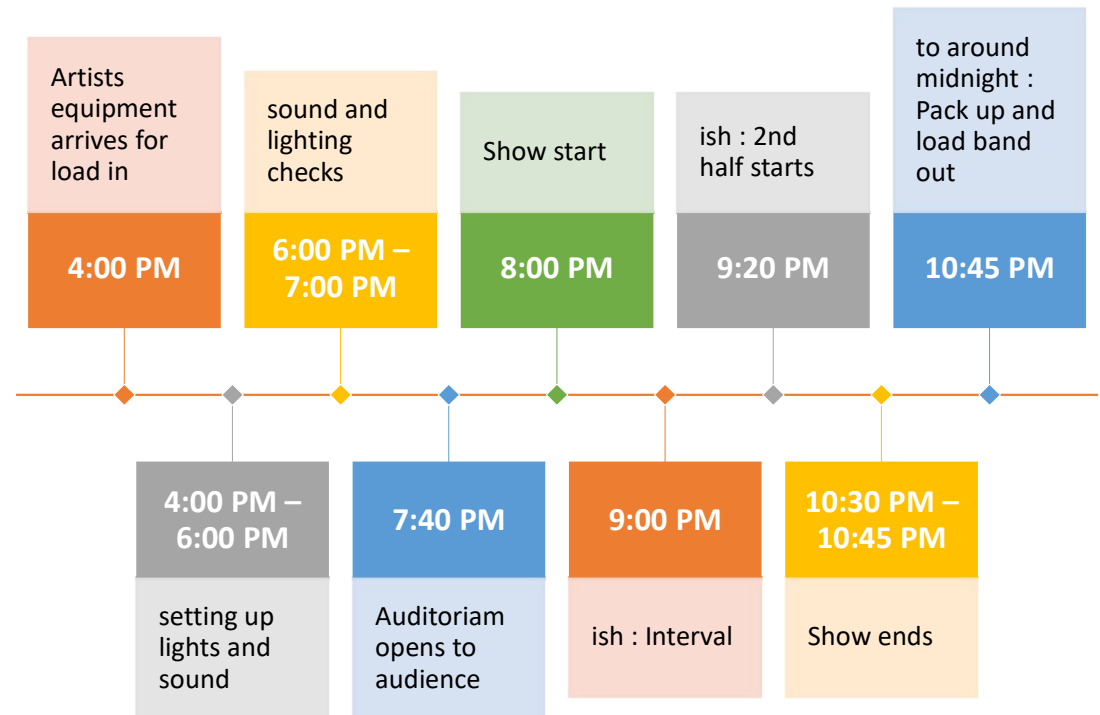


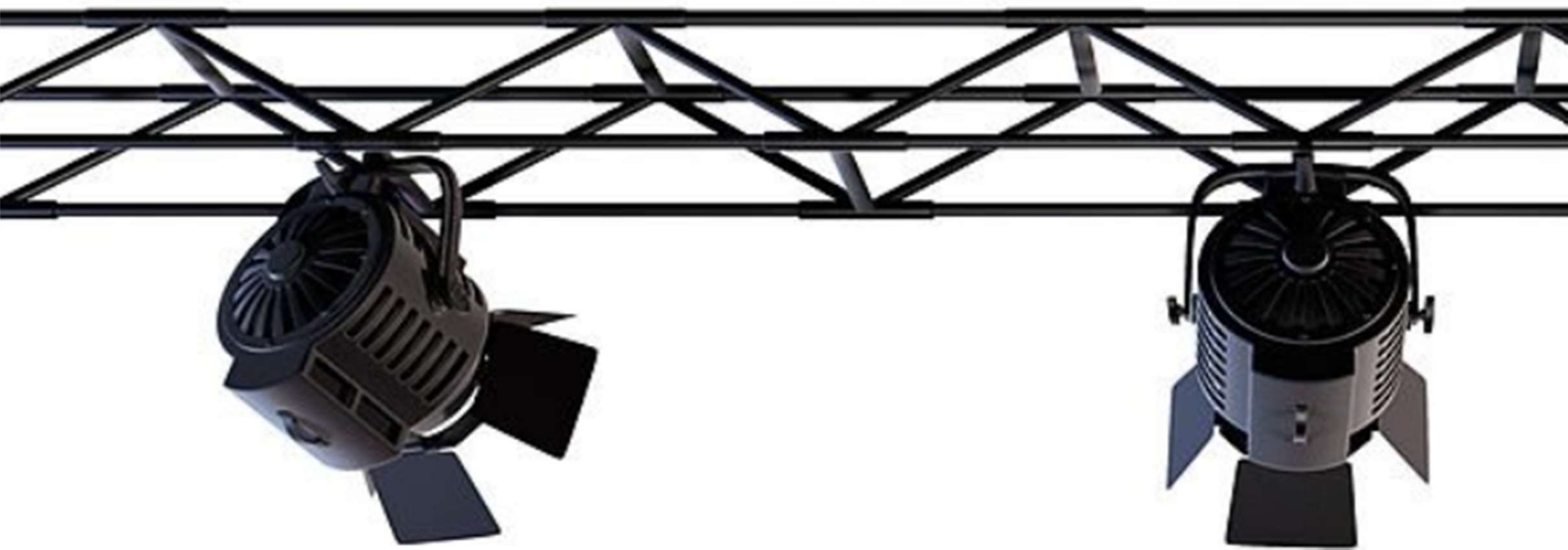
Started shadowing experienced lighting engineers



Eventually qualified to run lighting for shows

Typical show timings





Some of the kit – Main spots

Some of the
kit – Par cans



Mac Moving Lights

DYNAMIC EFFECTS

- 0 - 100% continuous dimming and strobe effects
- Color wheel with 6 x interchangeable filters
- Rotating gobo wheel 1 includes 5 interchangeable gobos + open
- Rotating gobo wheel 2 includes 5 interchangeable gobos + open
- Gobo animation wheel, indexing, continuous rotation with variable angle
- Frost (fade in)
- Pre-programmed effects: Two ranges of pre-programmed FX





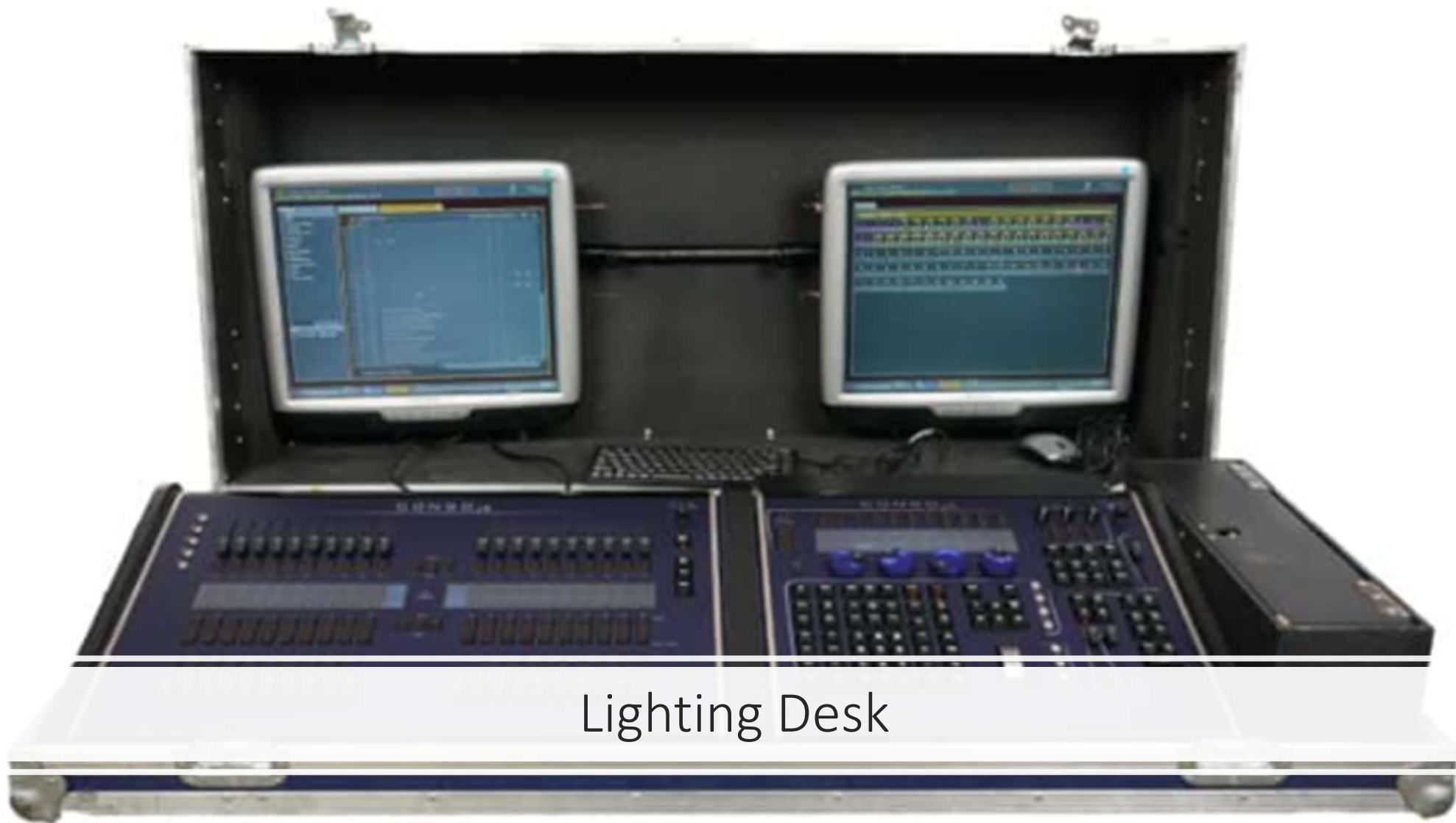
LED lights





Follow Spots





Lighting Desk

A photograph of a stage lighting rig. Several large, black, cylindrical spotlights are suspended from a complex metal truss system. The rig is illuminated with a mix of blue and orange light. In the foreground, a semi-transparent dark grey rectangular box contains the text "Setting up" in a white, sans-serif font. Below the box, a small white arrow points downwards. The background shows more of the stage structure and some out-of-focus lights.

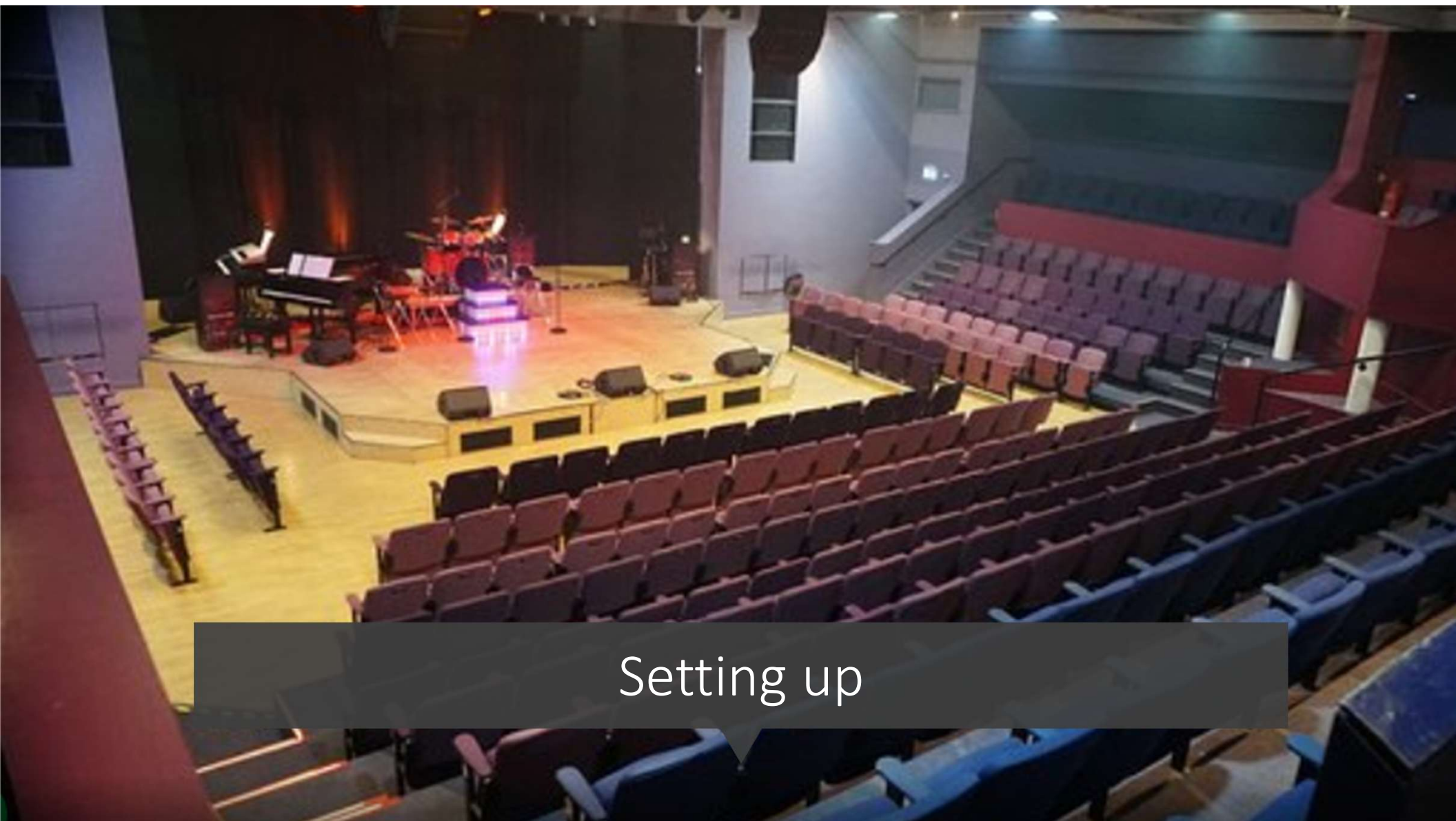
Setting up

Setting up



Setting up





Setting up



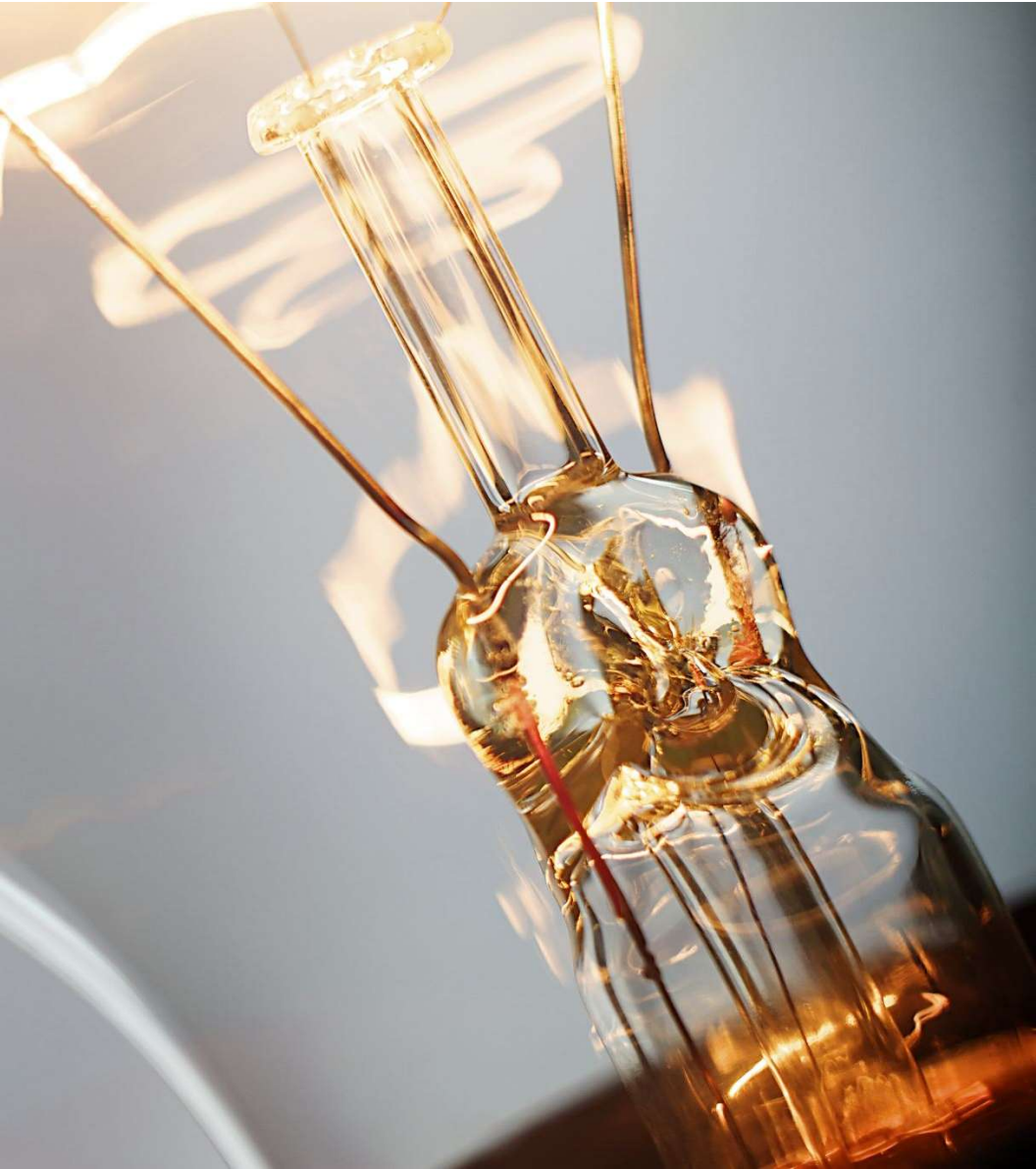
Lighting specs

Very variable

Lighting specs

- Very variable
 - Do what you like



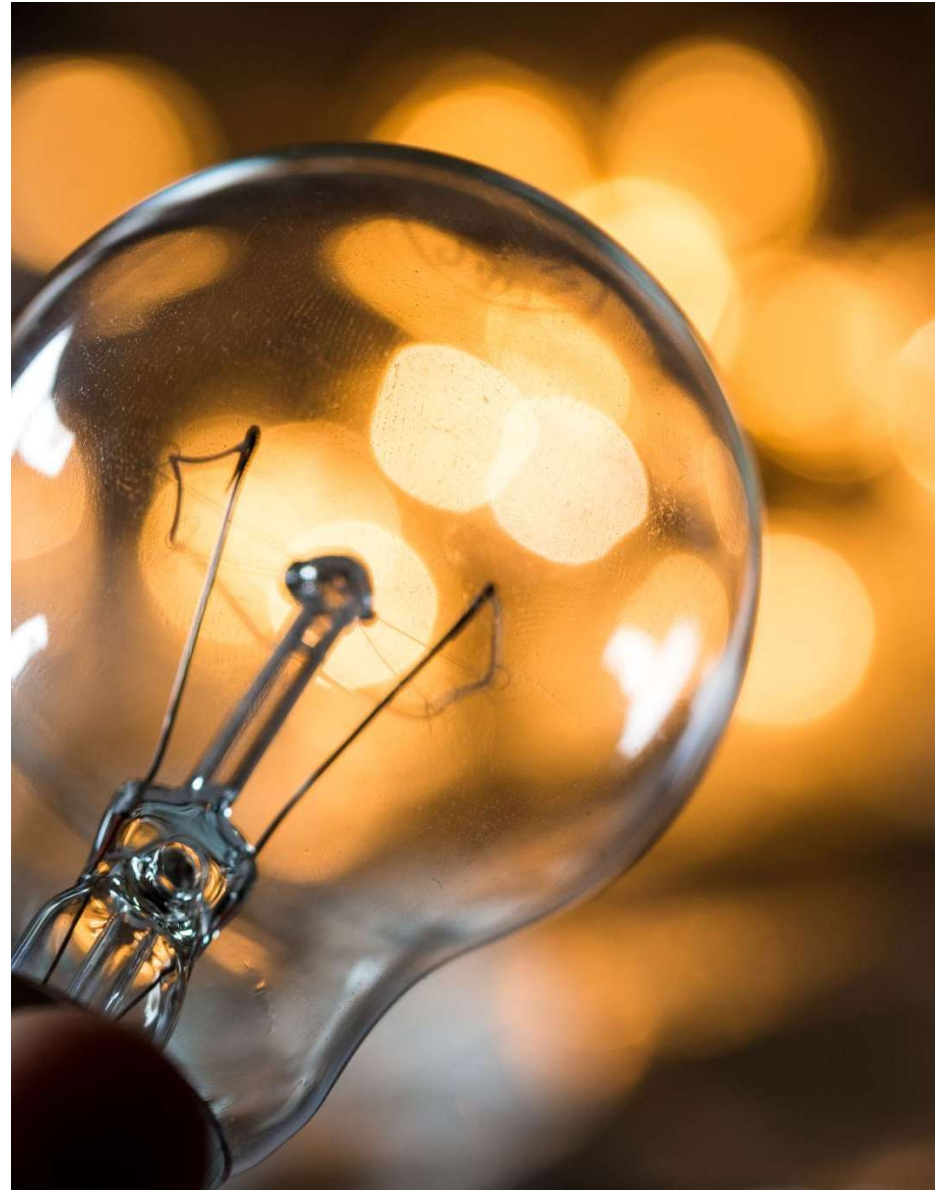


Lighting specs

- Very variable
 - Do what you like
 - Some guidance

Lighting specs

- Very variable
 - Do what you like
 - Some guidance
 - Very prescriptive (very annoying!)



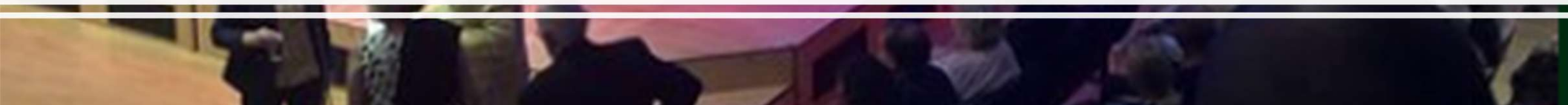


The stage is set





A Few Big Names



A few big
names (not
Lionel though
– just a
tribute act)





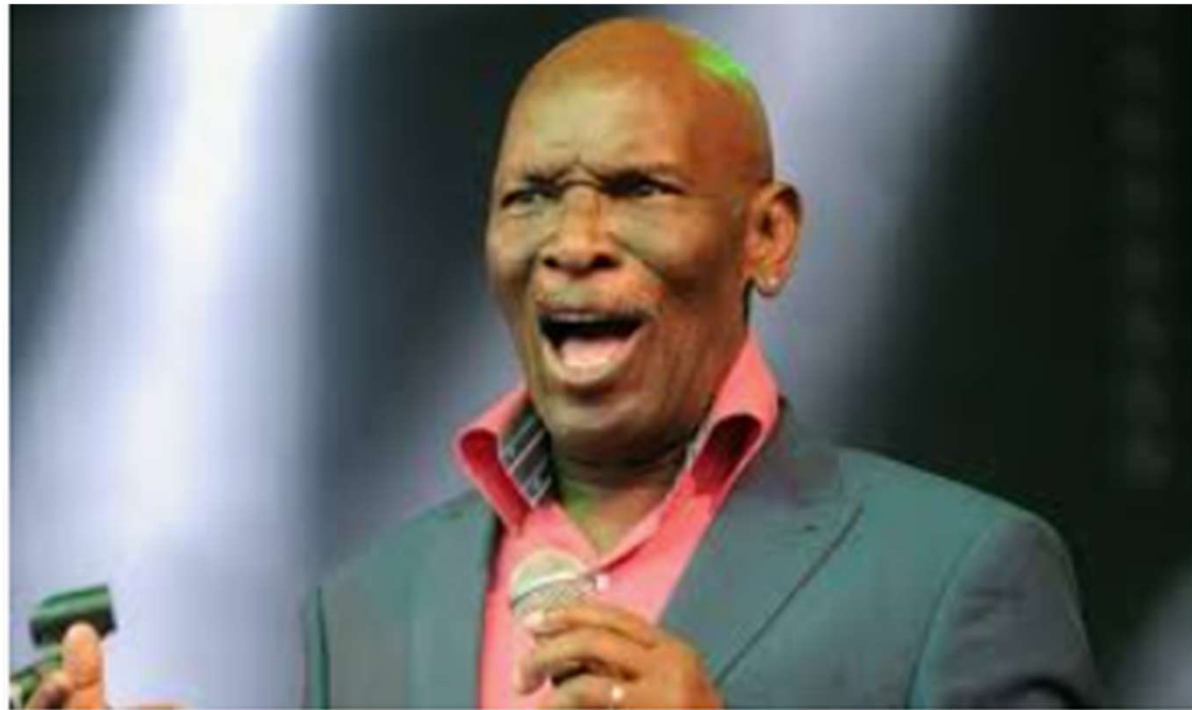
A few big names – This guy really was there!



Does not always go smoothly
(this lot set the smoke alarms off!!!)



Does not always go smoothly (had a full band as a support act and did not tell us!!!)



Does not always go
smoothly
(follow spot packed up
mid-show!!!)





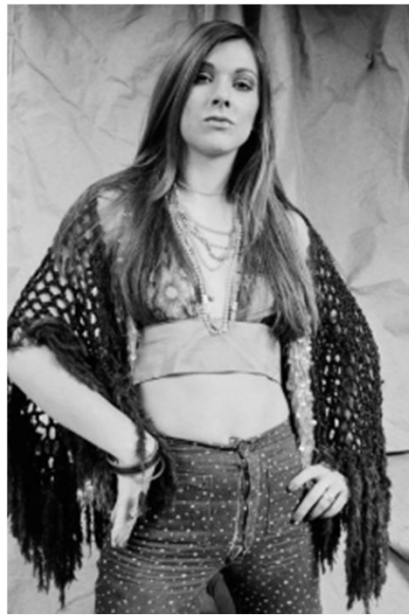
Lighting for a teenage
crush

Sonya Kristina (Curved Air)



Lighting for a teenage crush

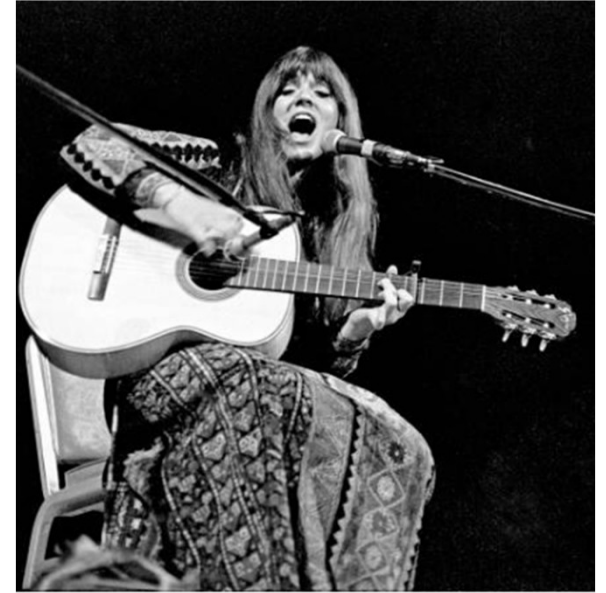
Sonya Kristina (Curved Air)



Lighting for a teenage crush

Melanie





Lighting for a teenage
crush

Melanie

Rock Legends

Uriah Heep



Rock Legends

Uriah Heep



Other interesting people

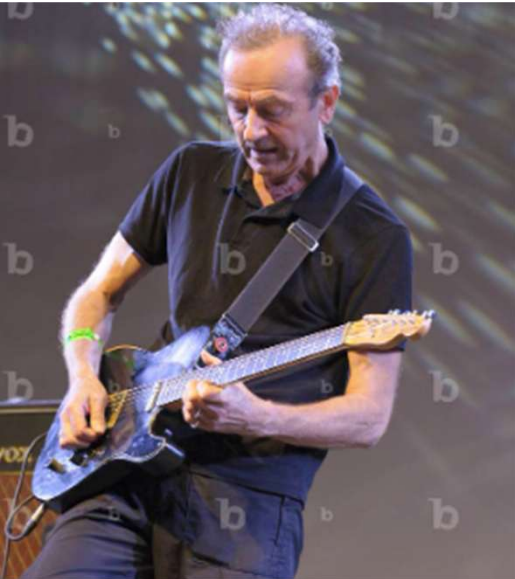
- Hugh Cornwell (The Stranglers)



Other interesting people

- Hugh Cornwell (The Stranglers)
- Manfred Mann



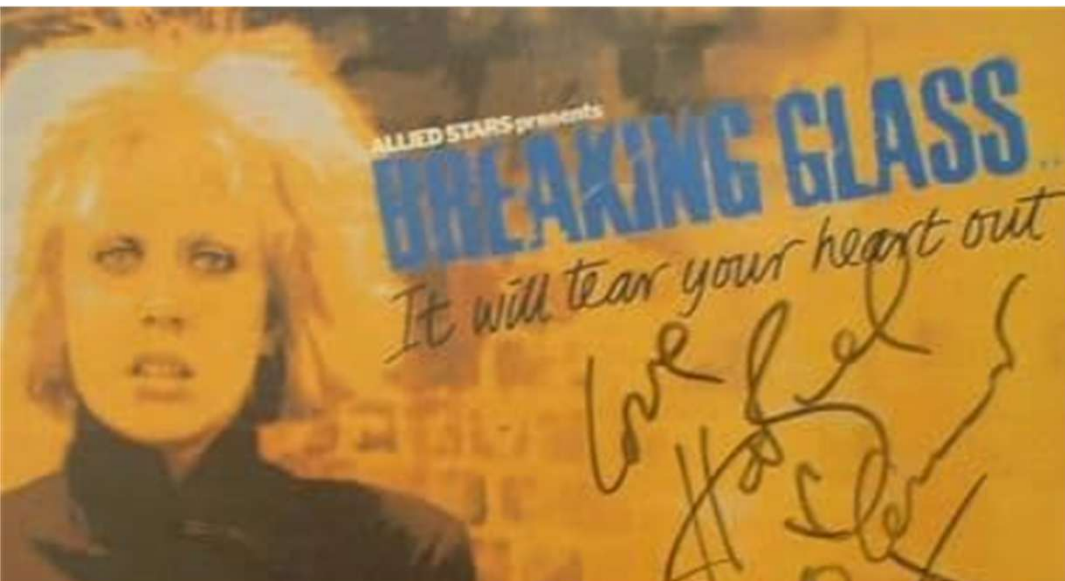


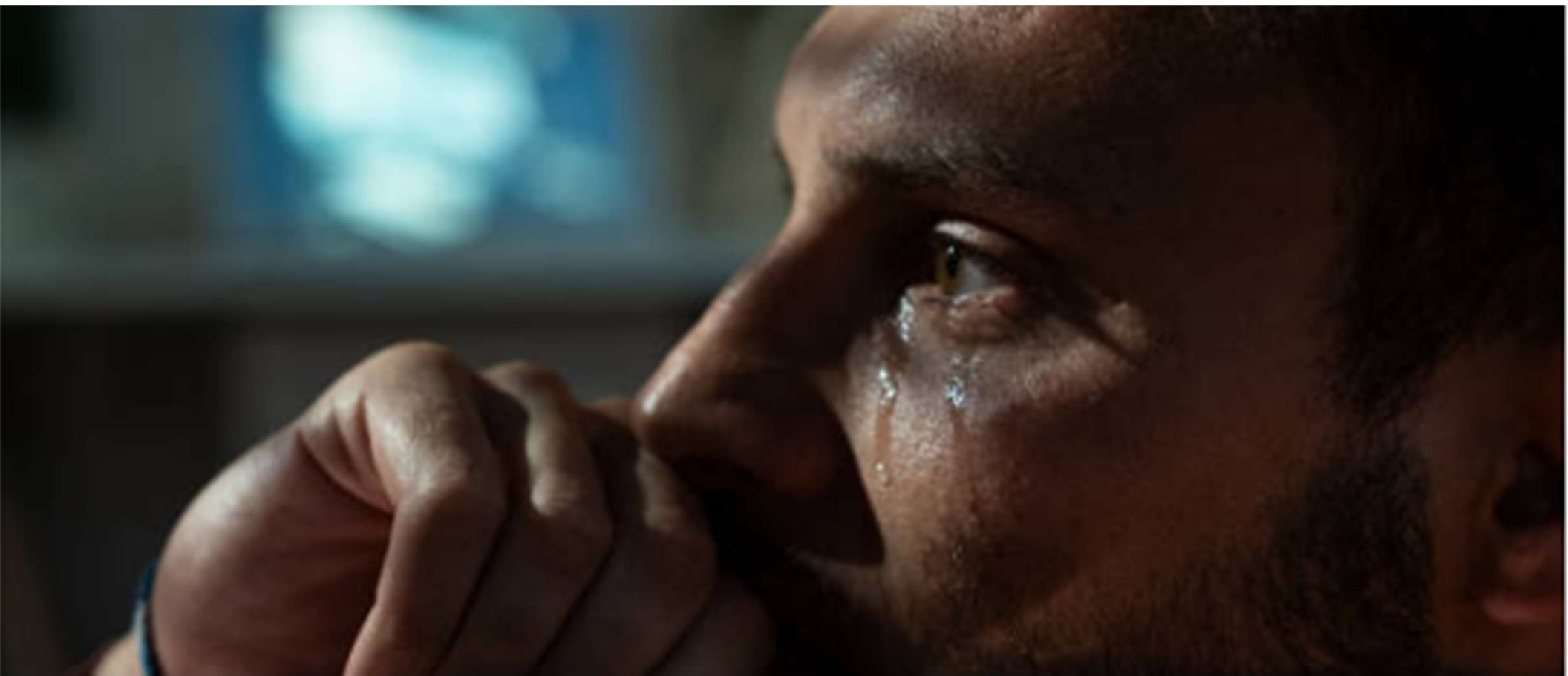
Other interesting people

- Hugh Cornwell (The Stranglers)

- Manfred Mann

- Hazel O'Connor





One that got away

One that got
away



One that got away



The End

Thankyou for
listening

Any Questions?